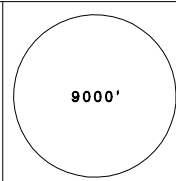
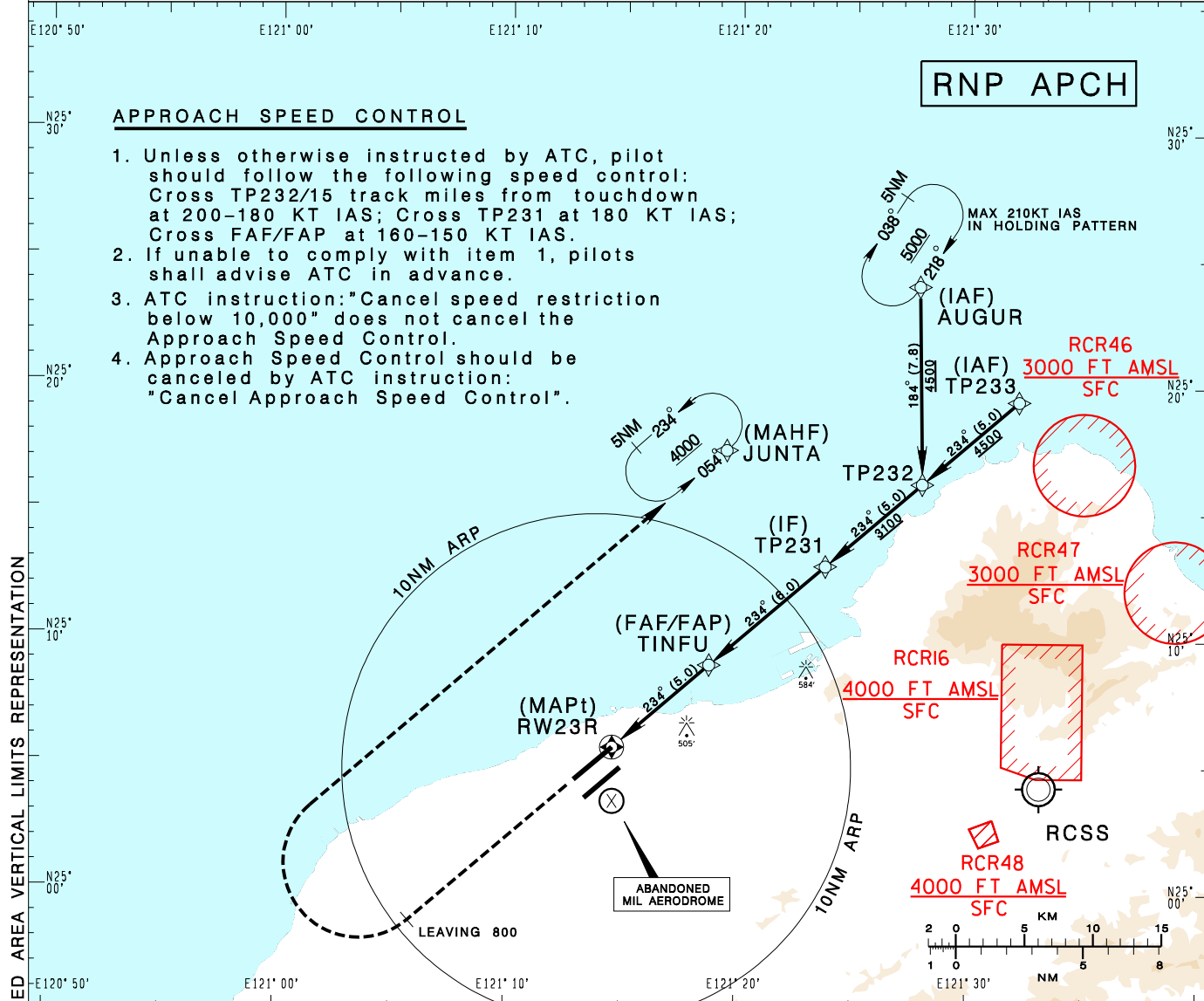


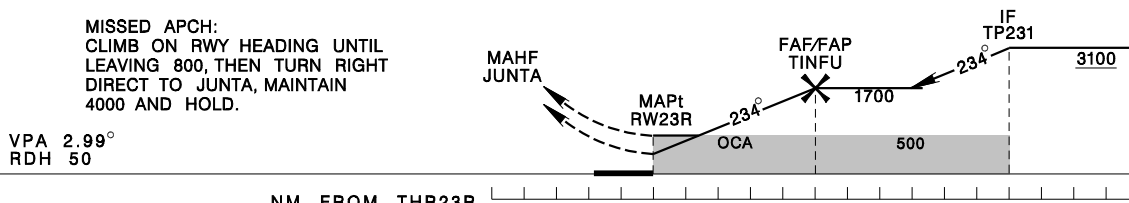
**臺灣桃園國際機場**  
TAIPEI/TAIWAN TAOYUAN INTL AD

RCTP  
RNP RWY23R

TAIPEI APP 125.1 128.5 125.6	TAIPEI TWR 118.7 129.3	ATIS 127.6	VAR 5° W 	
Apt Elev: 108'	Rwy23R THR Elev: 63'	Trans Level: FL130		Trans Alt: 11,000'
BEARINGS ARE MAGNETIC; DISTANCES ARE NAUTICAL MILES; ELEVATIONS, HEIGHTS IN FEET				



5NM	4NM	3NM	2NM	DIST to THR23R
1700	1383	1065	748	ADVISORY ALT



CATEGORY		A	B	C	D
LNAV /VNAV	STRAIGHT IN	510/1400 RVRI400 447	510/1400 RVRI400 447	510/1400 RVRI400 447	510/1400 RVRI400 447
	STRAIGHT IN (ALS OUT)	510/2100 447	510/2100 447	510/2100 447	510/2100 447
LNAV	STRAIGHT IN	610/1400 RVRI400 547	610/1600 547	610/1800 547	610/1800 547
	STRAIGHT IN (ALS OUT)	610/2100 547	610/2100 547	610/2500 547	610/2500 547

MINIMA (OCA IN FT, VIS IN M, OCH IN FT)

**NOTE**  
 1. CIRCLING NOT AUTHORIZED.  
 2. BARO-VNAV NOT AUTHORIZED BELOW 0° C.  
 3. PAPI AND RNAV GLIDEPATH NOT COINCIDENT.  
 4. SIMULTANEOUS HOLDING AT AUGUR AND JUNTA NOT AUTHORIZED.  
 5. DME/DME NOT AUTHORIZED.